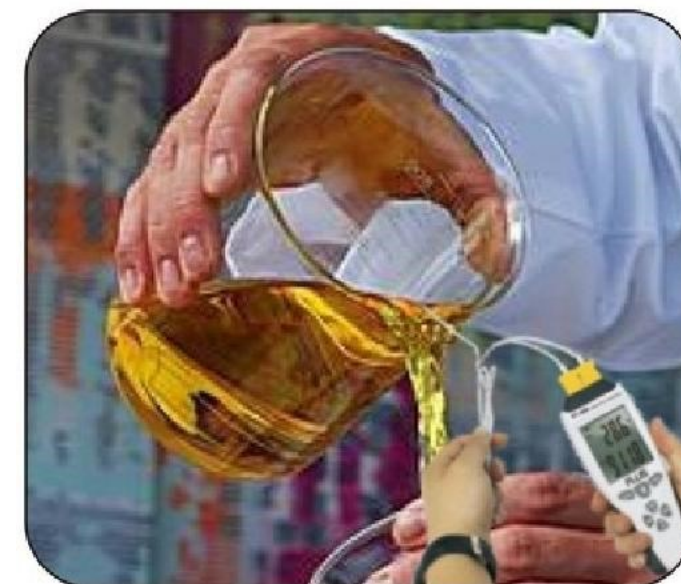


## K-type/J-type Thermocouple Thermometers ET-959/960

### FEATURES

- Large backlit display shows any combination of T1, T2, T3, T4, T1-T2, T3-T4.
- ◆ MAX, MIN, AVG record
- ◆ Electronic offset allows compensation of thermocouple errors to maximize overall accuracy
- ◆ Readout in °C, F, or Kelvin (K/J)
- USB interface (ET-959D/960D)
- ◆ Memory for at least 40000 readings per channel (ET-959D/960D)
- Auto power off mode to save battery



### Specifications

Type OF sensor: K-type/J-type thermocouple	✓	✓
Temp. range: Type K-200~1372°C (-328~2501F) Type J-210~1100°C (-346~2012F)	✓	✓
Accuracy: Type K: ±[0.5%rdg+1°C (1.8° T)] Type J: ±[1.0%rdg +1°C (1.8F)]	✓	✓
Operating conditions: -20~60°C; <90%rh (non-condensation)	✓	✓
Storage conditions: -20~60°C, <75%rh	✓	✓
Resolution: 0.1°C/° F	✓	✓
Signal input: signal input/dual inputs	✓	✓
Type K-Type K: T1-T2	✓	✓
Type K-Type K: T3-T4		✓
Type J-Type J: T1-T2	✓	
Type J-Type J: T3-T4		✓
Data HOLD, MAX, MIN, avg hold	✓	✓
Type K/type J dual inputs	✓	✓
Type K/type J dual inputs with datalogger		
Type K/type J four inputs		N
Type K/type J dual inputs with datalogger		
Dimension (L*W*H)	185*66*33mm	
Weight datalogger	245g	

Accessories: user's manual, 9V battery, type K/J temperature probe, USB cable (959D/960D) adaptor (959D/960D), software (959D/960D), tripod (optional), carrying pouch, gift box.