

Introduction

HUATO S380-WS data logger comes with large capacity, up to 120,000 readings. It can record at last for one year's data base on sampling frequency of 10minutes, also very safe. It comes with matched software for data download and transfer to computer when needed. Besides user can set the log time, sampling interval, and logging interval by software.

S380-WS



Features:

- comes with large LCD display, temperature, humidity, power and log status showing simultaneously.
- High precision digital sensor imported from Switzerland, adopt advanced industrial process of microprocessing tech (COMSens®), high precision, good consistency
- Ultra-low energy consumption, can work for one year base on sampling frequency of 10minutes
- Antistatic design, with a strong electromagnetic compatibility
- Explosion-proof design, passed the explosion-proof safety test, EX-mark: Ex ib IIA T4 Gb
- Explosion-proof area: Area 1, Area 2.

Specifications

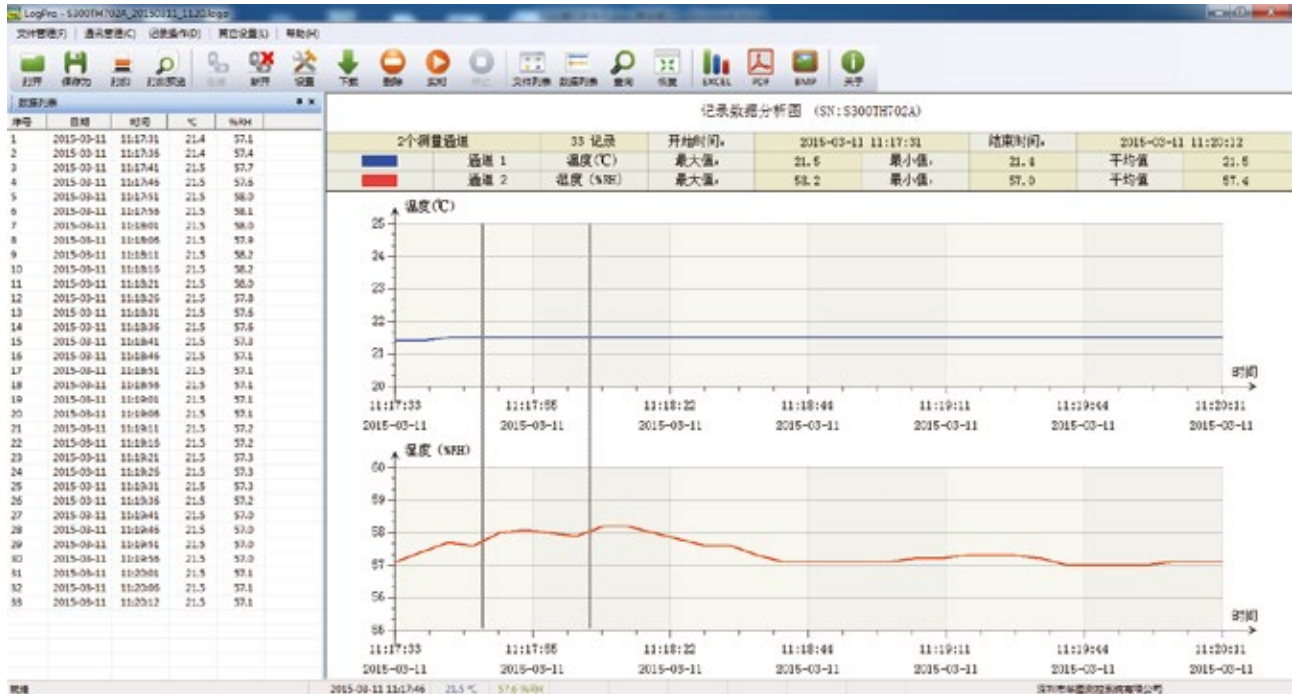
Item NO	S380-WS		
Temperature Accuracy	±0.5°C	Temperature Range	-20-70°C
Humidity Accuracy	±5%RH	Humidity Range	0~100%RH
LCD Size	27*39mm	Dimension	90*55*15mm
Powered	2x3.6v lithium battery	Log interval	2s - 24h as needed
Capacity	129024 readings		0.5h

Applications

Widely used in chemical factory, electronics factory, laboratory, medicine, food, workshop, gas storage, computer room, transportation, warehousing, scientific research institutes, museums, libraries, textile, commercial buildings, supermarkets, specialized laboratories and other fields.

Logpro software for data logger

Logpro software is special for Huato data logger device, beautiful interface, easily operation and diversiform function. Function included attribute setting, data download, data save automatically, data analysis by BMP graph, export data by Excel /pdf/BMP form.



Uvoznik i distributer za Srbiju i region
Klima BG solutins doo
Kumodraška 180
11000 Beograd



KlimaBg
SOLUTIONS d.o.o.

Za Srbiju: +381117702807
0640391010
www.klimabgsolutions.com
info@klimabgsolutions.com

